

HF MICRO READER DEMO SOFTWARE

Pico HF RFID reader series

HF Micro Reader ID-HF4A-RW1B

Software Guide

1st Edition March 2006

For more information, please contact www.pico-mega.com

Pico Mega reserves the rights to change its products and services at any time without notice. Pico Mega assumes no responsibility for customer product design or for infringement of patents and / or the rights of third parties, which may result from assistance provided by Pico Mega.



First edition - March 2006

This is the first edition of the manual, it describes about

Pico High Frequency Micro Reader ID-HF4A-RW1B

Software Guide

Firmware version 3.1

Pico Mega Design Labs (PMDL) reserves the right to make changes to its products or services or to discontinue any product or service at any time without notice. PMDL provides customer assistance in various technical areas, but does not have full access to data concerning the use and application of customer's solution. Therefore, PMDL assumes no liability and is not responsible for customer solution or software design or performance relating solution incorporating PMDL products. In addition PMDL assumes no liability and is not responsible for infringement of patents and/or any other intellectual or industrial property rights of third parties, which may result from assistance provided by PMDL. PMDL products are not designed, intended, authorized or warranted to be suitable for life support applications or any other life critical applications that could involve potential risk of death, personal injury or severe property or environmental damage.



Documentation

1. Introduction

2. System Requirements

2.1. Operating system

2.2. Hardware requirements

2.3. Initial Setup Procedure

3. User Interface

3.1. The Main Window

3.1.1. Menu bar

3.1.2. Communication window

3.1.3. Option Window

3.1.4. Command section

3.1.5. Response Window

3.1.6. Status window

4. Working with the Demo Software

4.1. Sending Commands to the Reader

4.1.1. Check status

4.1.2. Get Firmware

4.1.3. Get Baud

4.1.4. Auto Visual

4.1.5. Act/Dec VI

4.1.6. Get Single UID

4.1.7. Get Multiple Tags



4.1.8. Write Blocks

4.1.9. Read Blocks

4.1.10. Write Blocks with UID

4.1.11. Read Blocks with UID

5. Reference

5.1. Menu and Toolbar

5.1.1. File menu

5.1.2. Settings menu

5.1.3. Operations menu

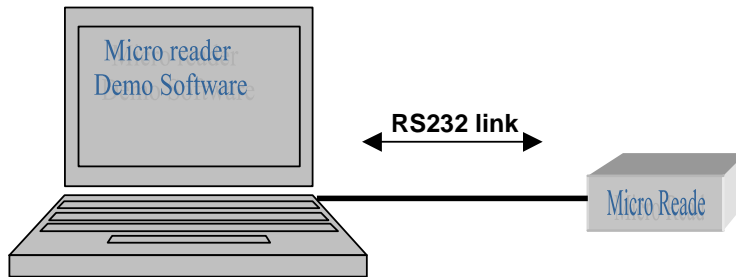
5.1.4. Logging Menu

5.1.5. Help Menu



1. Introduction

PICO HF RFID Micro Reader – Demo software is an application which lets you to send and receive the commands and data between the Micro Reader and the transponder. It allows you to monitor the communication between the transponder and the Micro Reader.



2. System Requirements

2.1. Operating system

- ❖ MS Windows 98/ME/NT/2000/XP

2.2. Hardware requirements

- ❖ Pentium processor 200 MHz or faster
- ❖ Minimum 32 MB RAM
- ❖ Minimum one COM port
- ❖ Standard RS232 cables required for connecting the reader for its operation.

2.3. Initial setup Procedure

- ❖ Install the demo software file in the PC.
- ❖ Connect the Micro Reader to the COM port of host PC using RS232 link cable.
- ❖ Power ON the Micro Reader.
- ❖ Open the demo software and click **Connect** button in the communication window
- ❖ Now the Reader is ready for use

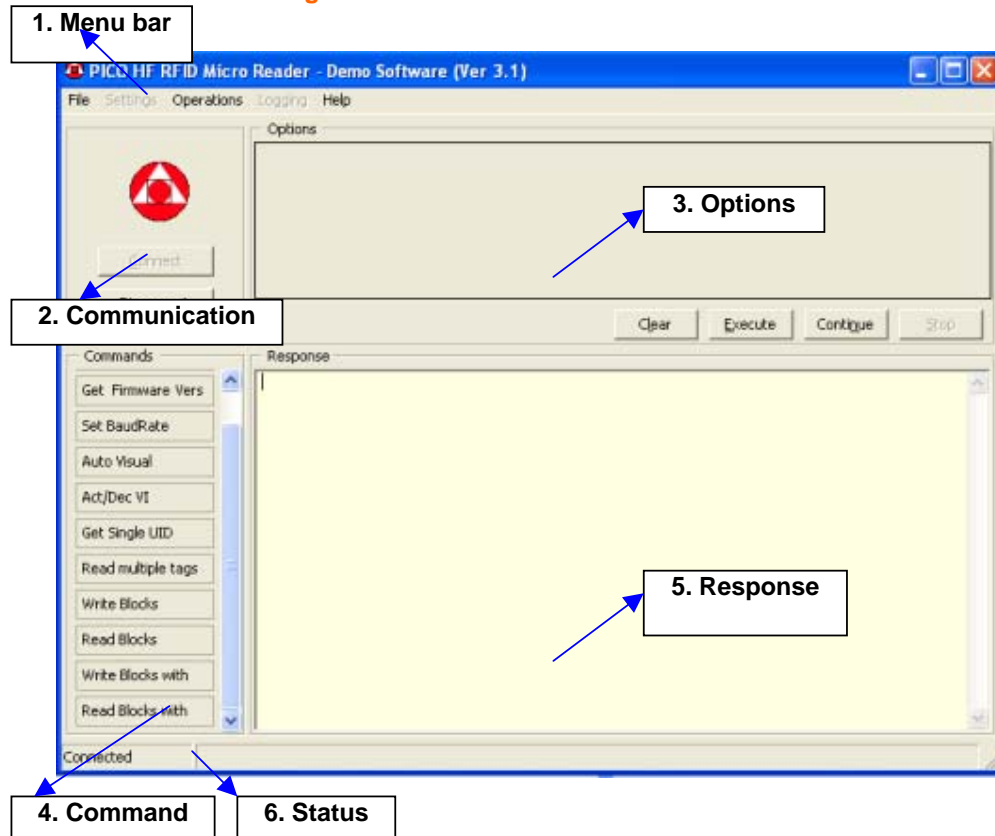


3. User Interface

3.1. The Main Window

The main window is divided into six sections as shown in the fig. 3.1.a

Fig 3.1.a Demo software Main Window



3.1.1. Menu bar

All main functions of Micro Reader may be selected from the Menu bar.



3.1.2. Communication window

The communication status selection is shown in the status section.

- Connect** : Starts the communication of the reader.
On click the Command section become active.
- Disconnect** : Ends the communication of the reader.
On click Command section becomes inactive.

3.1.3. Option Window

Option Window shows the respective fields to be entered by the user for the respective command selected in the command window.

- Execute** : One time execution of the selected command.
- Continue** : Continuous execution of the selected command.
- Stop** : Stop the execution.
- Clear** : Clear the Response window.

3.1.4. Command section

The command window is used to select the commands to the connected Micro Reader. When anyone of the command button get selected the control moves to option window.

3.1.5. Response Window

The result of the execution of various commands by the Reader is shown in the response window.

3.1.6. Status window

The 'Status window' indicates the communication status of the reader whether it is connected or disconnected.



4. Working with the Demo Software

Click the **Connect** button to connect the Demo software with the Micro reader. To **Disconnect** the reader click the disconnect button.

4.1. Sending Commands to the Reader

In the Command menu click any one of the command and look at the option menu. All Command button on click shows **Timeout field**. This field is used to set the time interval of the software at which the software will send the same command consequently in continuous mode operation. It does not make any difference in normal 'execute' mode. For 'Read multiple tag' command the minimum can be set is 350ms for all other commands the minimum time can be 5ms.

4.1.1. Check status

The 'Check status' command makes the reader to check the reader is in working condition or not. On Click, this command goes to the option menu. Select Execute to carry on the command and the response is shown on response window.

4.1.2. Get Firmware

The 'Get Firmware' command gives the firmware version of the reader. This command on click goes to option menu and select Execute to carry on the command to get the response.

4.1.3. Set Baud Rate

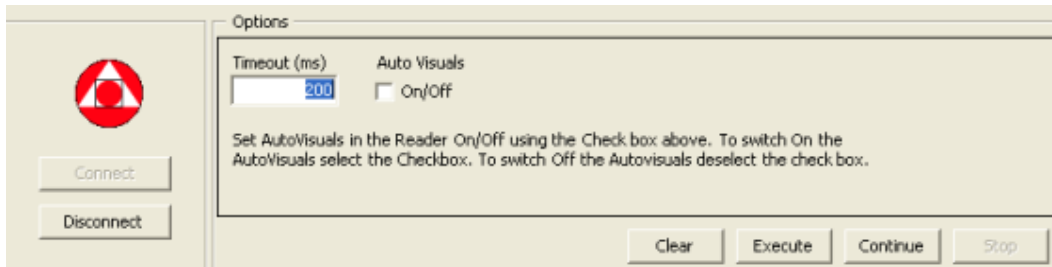
The 'Set Baud Rate' command on click goes to option menu and shows Baud rate field to select the transmission rate from 300 bps to 57600 except 38400 bps. Execute the command to set the baud rate. After the command has been executed the software will automatically changes its baud rate to the newly set baud value. No need to go and change the baud rate in the software 'setting' option.



4.1.4. Auto Visual

The 'Auto Visual' command on click goes to the option menu and an Auto Visual On/Off check box shown to select Auto visual. On selecting this checkbox makes the Reader to indicate visually by blinking the LED on valid RF command execution which will slightly reduce the execution time.

Fig 4.1.4 a Option window on 'Auto Visual' command

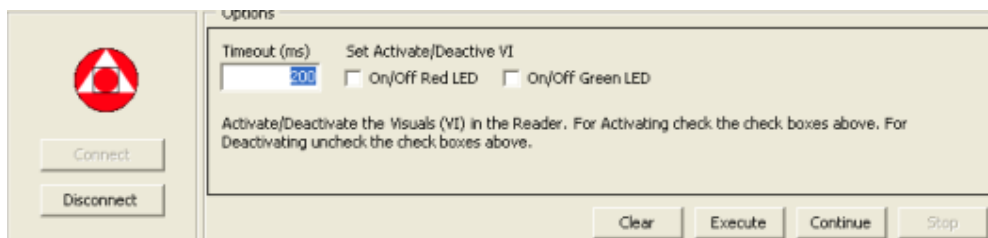


Deselecting the check box and executing the command will disable the auto visual setting which in turn will enhance the speed of the function.

4.1.5. Act/Dec VI

The 'Act/Dec VI' command on click goes to option menu and shows three checkboxes to On / Off the Red LED, Green LED for valid RF commands.

Fig 4.1.5 a Option window on 'Act/Dec VI' command



To activate the above devices check the appropriate boxes and to deactivate it uncheck the boxes.



4.1.6. Get Single UID

The 'Get Single UID' command on click goes to the option menu and shows the 'Antenna no' field to specify the antenna and on execution reads the UID of the transponder existing in the field. In continuous mode the 'time out' can be set the minimum of 5ms for fast operation.

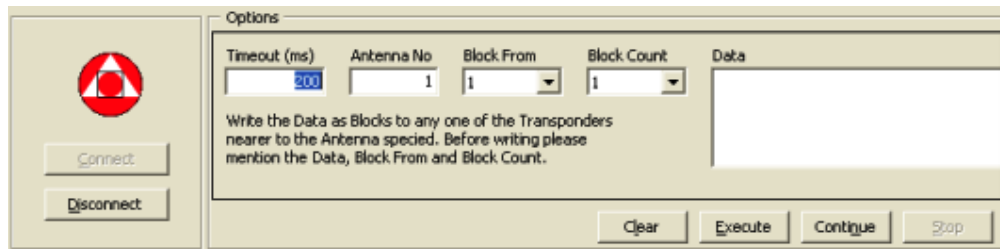
4.1.7. Read multiple tags

The 'Read multiple tags' command on click goes to option menu and shows the 'Antenna no' field to specify the antenna and on execution reads the UID's of all the transponders existing in the field. In continuous mode the 'time out' can be set the minimum of 350 ms for fast operation

4.1.8. Write Blocks

The 'Write Blocks' command on click goes to option menu shows the following fields such as Antenna No, Block From, Block Count and Data. Entering and executing the values to these fields selects the existing transponder memory and writes the data in the specified location.

Fig 4.1.8.a Option window on 'Write Blocks' command



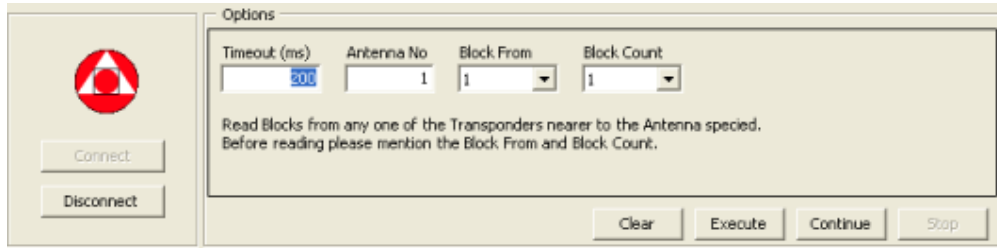
The tag contains 64 block of memory in which each block can store 4 characters. It should be noted that the block number starts from 1 not from 0. In continuous mode the 'time out' can be set the minimum of 5ms for fast operation.



4.1.9. Read Blocks

The 'Read blocks' command on click goes to option menu shows the following fields such as Antenna No, Block From, Block Count .Entering and executing the values to these fields selects the existing transponder memory and reads the data from the specified location.

Fig 4.1.9.a Option window on 'Read Blocks' command

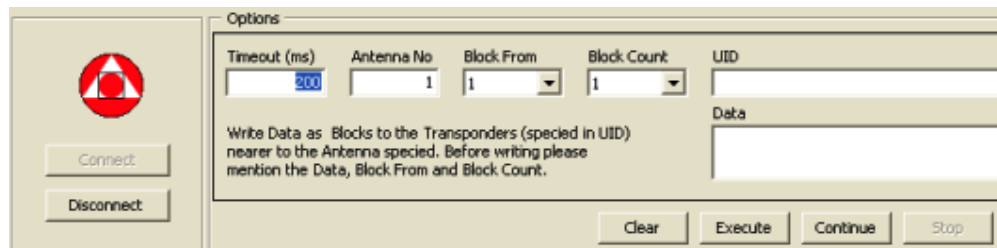


It should be noted that the block number starts from 1 not from 0. In continuous mode the 'time out' can be set the minimum of 5ms for fast operation.

4.1.10. Write Blocks with UID

The 'Write Blocks with UID' command on click goes to option menu shows the following fields such as Antenna No, Block From, Block Count, UID and Data. Entering and executing the values to these fields selects the UID specified transponder and writes the data in the selected location of memory of transponder.

Fig 4.1.10.a Option window on 'Write Blocks with UID' command



It should be noted that the block number starts from 1 not from 0. In continuous mode the 'time out' can be set the minimum of 5ms for fast operation.

